



Columbia Valley Community Foundation

**All donations benefit this Valley and are tax deductible.**

Smith & Andruschuk Chartered Accountants  
Advertisement sponsor



**Your generosity can work wonders**

Columbia Valley Community Foundation  
CARING ENOUGH TO GIVE.



**Columbia Valley Community Foundation ANNUAL REPORT 2010**



**First donor thanked by CVCF**

Bill Hay with CVCF directors Tim Strand, Bruce McLaughlin and Dawn Wilby.

Bill Hay was the first donor to the Columbia Valley Community Foundation. He was thanked by CVCF directors Tim Strand, Bruce McLaughlin and Dawn Wilby.





**Columbia Valley Community Foundation**  
**ANNUAL REPORT 2010**

**Table of Contents**

Board of Directors .....2

Mission Statement .....3

Mandate .....4

Message from the Chairman .....5

Fund and Donor Development/Public Relations Committee Report.....8

Granting Committee Report .....9

Investment Committee Report .....11

Donations Received.....14

Description of Funds .....16

Appendix 1: Financial Statement 2010.....18



## **Columbia Valley Community Foundation ANNUAL REPORT 2010**



### **Board of Directors**

*Seona Helmer- Chairman*

*Janice McGregor -Vice Chairman*

*Roger Smith – Treasurer*

*Marion Hoover-Secretary*

*Roberta Hall-Director-Director*

*Jenny Richardson- Director*

*Don Miller-Director*

*Heather Mitchell- Director*

*Emile Morin- Financial Committee advisor at-large*



## ***Columbia Valley Community Foundation ANNUAL REPORT 2010***



### **Mission Statement**

The Columbia Valley Community Foundation is a charitable organization dedicated to enhancing the vitality, dignity and quality of life in the Columbia Valley.

Our mission is to work in the community to encourage relations and leadership which focus on fund raising and effective grant-making that combined, improve life from Canal Flats to Spillimacheen, British Columbia.

The Foundation invests gifts from donors, primarily in permanent endowments funds, and distributes income to deserving, worthwhile charities.

The principles of compassion, fairness, integrity, accountability and approachability guide the Foundation.



## **Columbia Valley Community Foundation ANNUAL REPORT 2010**

### **Mandate**

1. For our philanthropic donors this is a permanent organization with a broad, dynamic mandate, which is used to channel the income from tax-deductible donations into areas of the community with the greatest needs.
2. This is primarily a permanent pool of capital from which the investment income is deployed to various charitable organizations in our communities that satisfy important local objectives, and meet the granting qualifications.
3. Because of its large overall view and permanent long-term nature, the Foundation is well suited to work on a local basis to identify community values, support human development, provide influence for positive change and enrich the diverse life of the Columbia Valley





## Columbia Valley Community Foundation ANNUAL REPORT 2010



### Message from the Chairman

I am proud to be a part of the Columbia Valley Community Foundation as it reaches the milestone of the first decade of incorporation. Our Foundation and community owes much gratitude to our founding board members for having the vision and tenacity to establish the CVCF, and to all subsequent board members that have contributed to its growth and success. A community foundation is by definition established for the long term, in perpetuity. So congratulations to the CVCF for the first decade and wishing it the best for the second and beyond. To borrow the catch phrase from the Ottawa Community Foundation, as it says so much about a community foundation in just three words:

***"For good, forever"***



## **Columbia Valley Community Foundation ANNUAL REPORT 2010**

“The times, they are a changin’”. So true. The economy is on a roller coaster ride and we are on board, and the ride “ain’t over yet!”. I would like to commend our Financial Committee for their guidance and prudence. In 2008 our annualized rate of return was minus 8.8%, in 2009, 9.8% and for 2010, 9.3%. Job well done. The committee also recommended that we “bring home” our retractable funds from the Vancouver Foundation in order that we can manage those funds. This process was completed in early 2011. Other notable changes were:

- the establishment of the Kootenay Savings Community Fund, made possible by the generosity of Kootenay Saving Foundation in 2009, support that continued in 2010
- a motion was made in December of 2010 that the CVCF create its own bursary for the graduating Class of DTSS, the details of which are being determined
- the Lynn Miller fund was dissolved with all value being transferred to the general fund as requested by Fern Keith

Community foundations have a two-fold task. Simply put they need to attract donors and we need to distribute funds into the community. In order to do these tasks successfully, the CVCF needs to be relevant and know the current state of our surroundings. Over the past few years we have moved to shift our role to that of being proactive in terms of identifying community needs and matching those needs with existing organizations. This is a work in progress. Two actions to move forward are:

1. A vital signs project that will give us a report card on how our catchment area is doing in terms of education, youth, health, environment, literacy, seniors, housing and other indices
2. Approaching in person, one by one, agencies that have charitable status and determining how involved they would be willing to get to partner/support projects initiated by groups that do not have charitable status.

These are measureable actions we can pursue in near future.

Discussion continues at the regional level with other community foundations with the goal of finding ways to share information and resources. This process is ongoing and supported by the Community Foundations of Canada and the Columbia Basin Trust(CBT).

While we were not able to secure any permanent paid staff in 2010, we were successful in obtaining office space at Pynelogs Cultural Centre. With a successful application to the Affected Area and Community Initiative Grant through the Regional District of East Kootenay and CBT we were able to obtain software and a new computer, and funds to update all our printed material.



## **Columbia Valley Community Foundation ANNUAL REPORT 2010**

These actions all work toward consolidation of information, records and resources, standardization, organization and effective succession for future planning for the CVCF.

In 2010 we carried out a spring and fall granting cycle. Grants totalling \$ 30,000 were approved. The number of applications in the fall was disappointing and demonstrated our need to be more effective in recognizing and directing community actions. A feature we have discussed in the past and I would like to see in future years and added to the requirements of the successful grantees is the submission of "stories" for the Annual General Report. By submitting a paragraph or two about the project once completed, the applicant has a forum to share with the community how the project turned out, and what it meant to the agency that made the application. Donors too could submit stories as to why they believe our community foundation is worth investing in. These stories will provide feedback to us, to the investors and to interested members of the community that receive our Annual General Report and read our website.

As the CVCF moves into its second decade, I would like to thank all the donors, past and present. Thank you so very very much. I would also like to thank all the Board Members, past and present ,that have dedicated their time through the steep learning curve. Thank you for your dedication and love of your community.

Seona Helmer, Chairman, 2010





## **Columbia Valley Community Foundation ANNUAL REPORT 2010**

### **Fund and Donor Development/Public Relations Committee Report**

This committee continued to be challenged in 2010 with the reluctance of people and corporations to make financial commitments. We advertised in the local papers, set up a booth at the craft fair and displayed donor cards in two local businesses. Although we didn't generate a great deal of donations, we believe that our efforts were well spent in raising the awareness of the CVCF in the community. We feel that the lack of giving is largely due to the lack of optimism in the economy, and of individuals' concerns for their own finance.

We added Canadahelps.ca to our web site, allowing visitors to the site to give on line. We also were successful in obtaining funds from the CBT to update our information package. Circulating this material to law firms, service clubs and financial advisors and businesses, along with developing a power point presentation is work in progress.

We look forward to sharing our ideas on how to raise awareness and strengthen our communities.





**Columbia Valley Community Foundation  
ANNUAL REPORT 2010**

## Granting Committee Report

Grants issued amounted to: \$30, 736.71

Spring Cycle : \$28, 160.00

Fall Cycle: \$ 2, 576.00



### **Spring grants:**

**Invermere Hospital Auxiliary** received **\$10,000** to provide equipment for the new emergency room at the Invermere District Hospital.

**Special Olympics BC: Special Olympics Invermere** received **\$1850** to activate a program for individuals with intellectual disabilities and also a sports program for athletes aged 10 & over.

**Wildsight: Healthy Water – Lake Windermere Project.** We assisted in funding the Lake Windermere Regatta & Water Stewardship Event with a **\$2000** grant.

**Conrad Kain Centennial Society: Cairn Rock ID & Mt. Ethelbert Sign.**

The Wilmer memorial to Kain has identification of the rock origins on four sides of the cairn and a geo-cache for the future Geo-cache trail.

Also a cairn with signage on the highway near Briscoe will mark Mt. Ethelbert. **\$2100**



**Columbia Valley Community Foundation  
ANNUAL REPORT 2010**

**Invermere Companion Animal Network society "ICAN": Trap/Neuter/Release Program ("TNR")**

**\$2000** was given towards funding this feral cat problem.

**Edgewater Recreation Society/Edgewater Youth Centre Arts & Crafts Show**

**\$2500** granted to provide a sewing machine & supplies to fund a Textile & Art program.

**Village of Canal Flats: Water to the Beach**

A pump and valves were procured with a **\$2500** grant allowing for irrigation at the public beach.

**Operation Track-shoes. (Kinsmen Club Tom Saunders fund)**

A **\$5210** grant allowed a group of special needs athletes to travel to Victoria for a weekend trip.

**Fall grants**

**Columbia Valley Arts Council** received **\$576.71** to replace the projector bulb for the film series projector

**Canal Flats Food Bank** received **\$2000** towards their hamper program



## **Columbia Valley Community Foundation ANNUAL REPORT 2010**

### **Investment Committee Report**



This report was prepared to provide a summary of investment and related matters expected to be of interest to donors and others familiar with the Foundation's objectives.

#### Assets

At year end 2010 the Foundation had \$834,352 invested very conservatively in 7 % cash or equivalent, 46% in bonds or term certificates and 47 % in stocks. All stocks are held in mutual funds thus providing a large degree of diversification. Also, during 2010 the Foundation experienced an annualized rate of return on its investments of 9.3 %. Of interest, the return in 2009 was 9.8 % and in 2008 was minus 8.8%.

#### Expenditures

During 2010 the Foundation experienced total operating costs of \$8,745 which is about 1% of the total assets at year end.

#### Granting

The Foundation receives gifts from donors and the income from assets accumulated is distributed as grants to deserving charities in the Columbia Valley from Canal Flats to Spillimacheen. During 2010 the Foundation distributed \$37,760 in grants. Of interest, grants distributed since the Foundation was initiated in December 2001 have totaled \$242,796.



**Columbia Valley Community Foundation  
ANNUAL REPORT 2010**

Endowment Funds

Although the Foundation exists to give money away, it is required to protect the principal of those gifts designated as endowment funds which must be held in perpetuity. The directors also believe it is prudent to protect the endowment funds from erosion through inflation by allowing for a modest 1½ to 2% growth per year in these funds.

At year end the status of the various endowment funds held by the Foundation was as follows:

Fund Name	Cumulative Contributions	Value at Year End
Community Fund	\$303,053	\$339,197
Fairmont Family Fund	\$26,500	\$31,654
Ann Tilley Memorial Fund	\$6,175	\$7,386
Our Children’s Legacy Fund	\$77,000	\$88,261
Tom Saunders Memorial Fund	\$50,000	\$60,839
Arnold Ellis Scholarship Fund	\$5,000	\$5,579
Gordon Wilder Memorial Fund	\$50,000	\$54,292
Bidder Bursary Fund	\$10,000	\$10,446
Opportunities For Youth	\$87,640	\$89,397
Kootenay Savings Community Fund	\$107,065	\$114,433
<b>TOTAL ENDOWMENT FUNDS</b>	<b>\$722,433</b>	<b>\$801,483</b>



## ***Columbia Valley Community Foundation ANNUAL REPORT 2010***

In addition to the endowment funds, the Foundation has also set aside \$11,764 for future operating costs. It also receives flow-through gifts that are to be distributed as grants usually within three years and are therefore not held as endowment funds. At the end of 2010 flow-through funds and funds set aside from endowment for grants totaled \$21,104.





**Columbia Valley Community Foundation  
ANNUAL REPORT 2010**

**Donations Received**  
**Thank you to our many supporters!**

**Donations received through 2010**

John & Margaret Allan

Anonymous

Don Beddie

Ken and Agnes Bell

Birch Creek Placer Ltd.

Claude Campbell

Ian Cartwright

Robert and Lorraine Campsall

Columbia Basin Trust

Columere Park Developments Ltd.

George Deck

Kathleen Dezall

Brendan Donahue

Georgina and Bill DuBois

Steve Ebborn

Emile and Arnold Ellis

Estate of Robert Bidder

Fairmont Business Association

Fairmont Hot Springs Resort Ltd.

Fairmont Park Properties Ltd.

Fairmont Resort Properties Ltd.

Fairmont Village L. P.

Robert Fowler

Louise Frame

Ann Futa

Jim Galloway

Goodman and Company

Investment Council Ltd.

Ken and Ruth Gordon

Roberta Hall

Nelda Harker

Bill and Nancy Hay

Helen Holm

Mary Hornett-Twigg

Amanda Hubbard

Kicking Horse Coffee Co. Ltd.

Art and Fern Keith

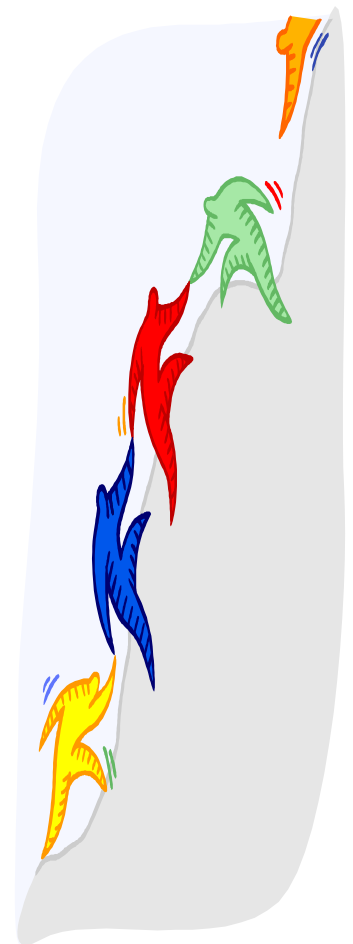
Lake Auto Service Ltd.

Legacy Kitchen Design Group

George and Arlene Loewen

Dave and Marla Lucas

Leonard and Patricia Luders





**Columbia Valley Community Foundation  
ANNUAL REPORT 2010**

Norm MacDonald

MacKenzie Financial Group

Bruce and Marlene McLaughlin

Emile and Lorraine Morin

Dave and Donna Rae

Charles and Audrey Osterloh

Gunter and Ida Rapp

Bev Palfrey

Rocky Mountain Realty Ltd.

Wayne and Gail Rossington

Kate and Rolf Schneider

Carol and Don Seable

James and Gloria Sherbut

Roger and Dot Smith

Tim and Donna Strand

John Tilley

Hedi Trescher

Wings over the Rockies

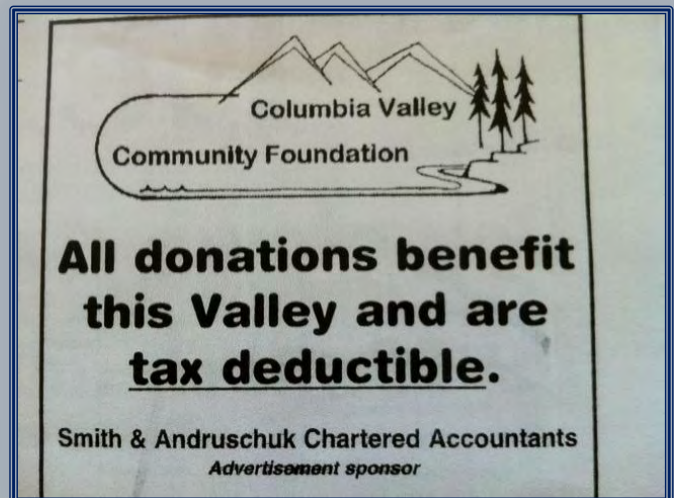
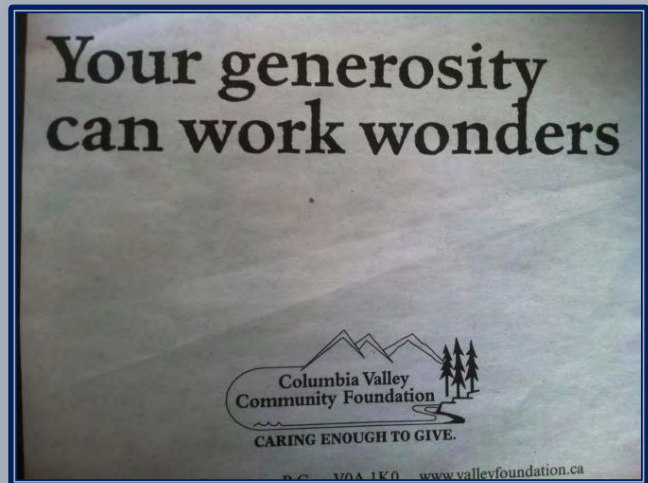
Westfield Homes Ltd

Vancouver Foundation

Daniel Zurgilgen

**To Remember**

Gisele Pilon-Blackman, Rosie Bunge, Cara Reinarz, Tom Sanders, Cristel Sillner, Ann Tilley, Gordon Wilder



## Description of Funds

### 1. Community Fund

Non-designated, open fund December 2008

The Community Fund was established in November 2001. This fund gives the Foundation maximum flexibility to respond creatively and effectively to the needs of deserving charities in the Columbia Valley from Canal Flats to Spillimacheen.

### 2. Opportunities for Youth

This fund was established in 2006 with a significant donation from an anonymous valley couple. It's objective is to provide opportunities for youth of the valley to expand their social, career and personal skills.

### 3. Our Children's Legacy Fund

Donor-Advised, open fund

Established in September 2002, income from this fund will be distributed to deserving charities in consultation with Dave and Donna Rae.

### 4. Tom Sanders Memorial Fund

Donor-Advised, open fund

Established in December 2002, income from this fund will be distributed to charitable activities in consultation with the Executive of the Kinsmen Club of the Windermere Valley.

### 5. Gordon Wilder memorial fund

Donor-Advised, open fund

The Gordon Wilder Memorial Fund was established in December, 2005. Income from this fund will be distributed to deserving charities focusing on the Fairmont area in consultation with Donald and Carol Seable.

### 6. Fairmont Family Fund

Field-of-Interest, open fund

The Fairmont Fund was established in December 2001 to enhance the quality of life of families in the Fairmont Hot Springs area.

#### 7. Bidder bursary Fund

Since its' beginning in 2006, this fund's purpose is to encourage and recognized educational initiatives within the Columbia Valley. The focus will be post secondary and based on need.

#### 8. Ann Tilley Memorial Fund

Field-of-Interest, open fund

The Ann Tilley Memorial Fund was established in December 2002 to provide to the Canal Flats community as a first priority: literacy to adults and children, services to women, and medical and health services to the community.

#### 9. Arnold Ellis Scholarship Fund

Field-of-Interest,

The Arnold Ellis Scholarship Fund was initiated in February 2004 to provide scholarships and bursaries for the training and education of youth at the post secondary level at trade school, technical, college and university institutions.

#### 10. Kootenay Saving Community Fund

Non- designated fund,

Established in 2010 as a result of a grant from the Kootenay Savings foundations of \$115,000, 5% of which was designated for flow through,

**Appendix 1: Financial Statement 2010**